

How to install Venetian Blinds



What you'll need:



Measuring
tape



Level



Box Knife



Drill



P2 Phillips Screw
Tip, 100mm Long



#6 Countersink
Drill Bit

Before Beginning

Check the order form to ensure you have all the parts required for the type of installation you are undertaking

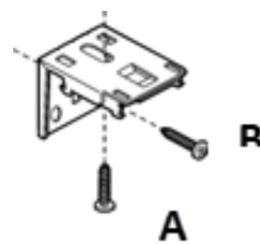
Make sure the 'Item #' box labels match if multiple panels will be used. This application will have a separate frame box or boxes to match with the 'Item #'



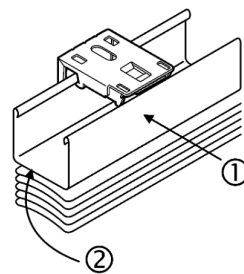
25mm aluminium venetians steps

- 1 The brackets can be recess fixed (A) or wall fixed (B) near each end of the blind with approx. 1-metre intervals between. Perfectly level.

NOTE: Make sure that the brackets are not located above any of the components inside the headrail (the blind operation may be affected).



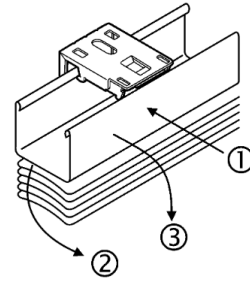
- 2 After fixing the brackets to the window, offer the blind up to the brackets (1) and hook the front lip of the head rail over the front of the brackets. Then rotate the rear of the head rail upwards (2) & push it back until it is able to lock into place.



Clip the clear tilt wand onto the tilter at the top of the blind (alongside the cordlock).

-  Please see next page for 'Step 3', '50mm Aluminium spring brackets steps' and 'Imported 25mm venetians steps'

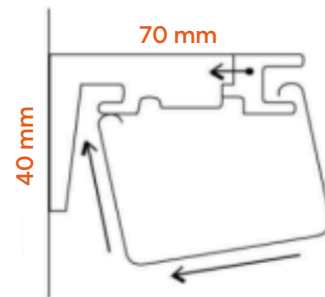
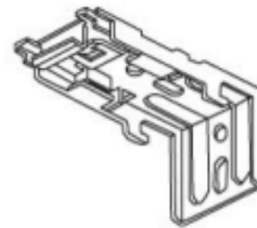
- 3 Dismounting the blind:** First, raise the blind fully. Then press the head rail in the direction of arrow (1). Lower the rear of the head rail (2). Pull the blind towards you and away from the brackets in the direction of arrow (3).



Congratulations, the installation of this opening is now complete.

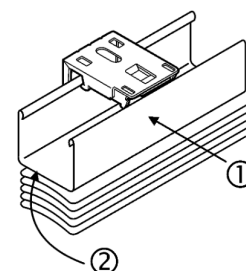
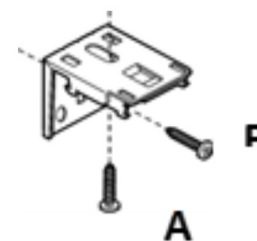
50mm aluminium venetians spring brackets steps

- 1** Install these brackets clear of the internal headrail components.
- 2** Simply slip the Headrail onto the front hooks of the bracket. Push inwards and twist the back of the Headrail upwards in one motion. The Headrail will snap into position.



Imported 25mm venetians steps

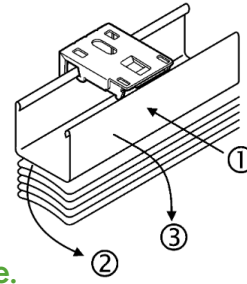
- 1** The brackets can be recess fixed (A) or wall fixed (B) near each end of the blind with approx. 1-metre intervals between. Perfectly level.
- NOTE:** Make sure that the brackets are not located above any of the components inside the headrail (the blind operation may be affected).
- 2** After fixing the brackets to the window, offer the blind up to the brackets (1) and hook the front lip of the head rail over the front of the brackets. Then rotate the rear of the head rail upwards (2) & push it back until it is able to lock into place.



Clip the clear tilt wand onto the tilter at the top of the blind (alongside the cordlock).

- Please see next page for 'Step 3' and "50mm & 63mm Faux Wood venetians box brackets steps'**

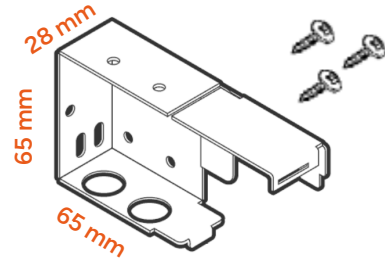
- 3 Dismounting the blind:** First, raise the blind fully. Then press the head rail in the direction of arrow (1). Lower the rear of the head rail (2). Pull the blind towards you and away from the brackets in the direction of arrow (3).



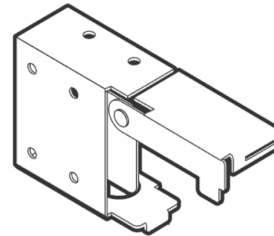
Congratulations, the installation of this opening is now complete.

50mm & 63mm Faux Wood venetians box brackets steps

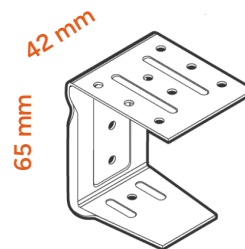
- 1 The box brackets** are marked left and right and must be installed with the flap hinged at the top and facing out. Place 2 screws in each bracket either into the side of the window frame or through the top or rear of the bracket into the window frame or wall.



- 2** Larger blinds will come with an intermediate bracket that should be fitted in the middle of your window frame. This may have to be offset slightly if it interferes with the middle ladder tape of the blind.



- 3** Offer the blind up to the brackets and slide it into the brackets from the front. Close both box bracket flaps and ensure you hear a 'click' as they lock into place.



- 4** Check the operation of the blind – raising, lowering & tilting should all operate smoothly & fully. If not, dismount the blind & check that components are all locked into place & are not being fouled by brackets.

If the blind comes with a pelmet, this may now be fitted to the blind: There will be a series of Velcro pads along the front of the head rail – peel off the top protective layer off each pad, and press the pelmet firmly onto the pads, making sure that it is lined up properly with the blind.

Dismounting the blind:

Raise the blind fully. Remove the pelmet, lift the flaps up on both of the box brackets and then slide the blind towards you and away from the brackets. A second person may be needed to help with larger blinds.

Congratulations, the installation of this opening is now complete.



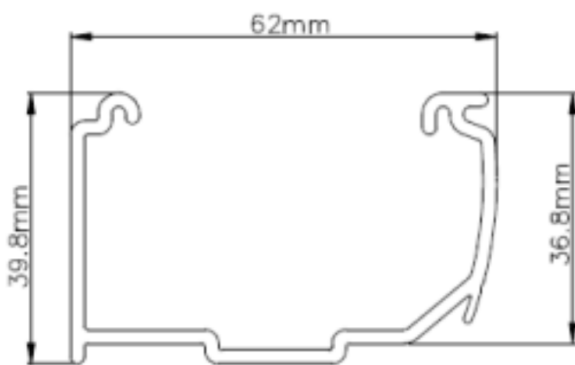
Please see next page for 'Imported Wide slat 50/63mm Faux Wood and Phoenixwood steps'

Imported Wide slat 50/63mm Faux Wood and Phoenixwood steps

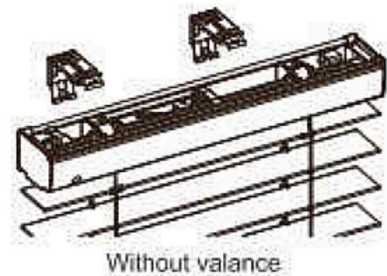


Watch video

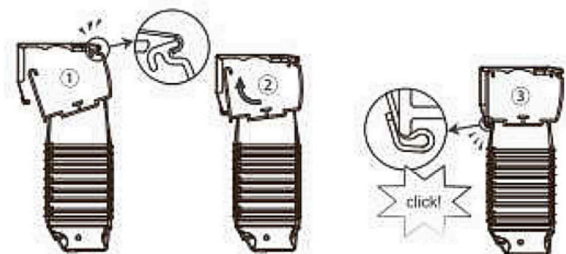
<https://normanusa.com/app/uploads/2022/03/Ultimate-FW-installation-video.html>



- 1 For blind without valance, attach the headrail to the brackets directly as shown to the right.



- 2 Choose one of below ways to attach the headrail to bracket. Start with attaching the headrail front to the bracket first.



Congratulations, the installation of this opening is now complete.



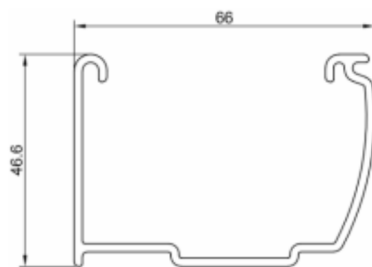
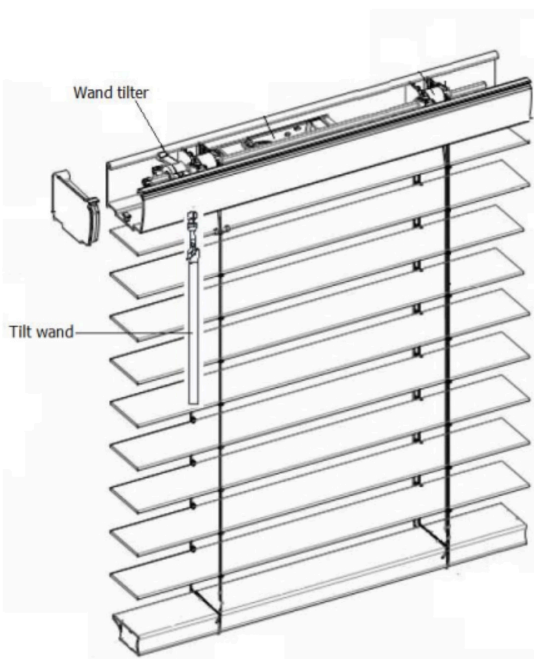
Please see next page for 'Imported wide slat cordless steps'

Imported wide slat cordless steps

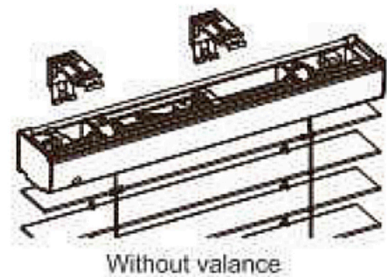


Watch video

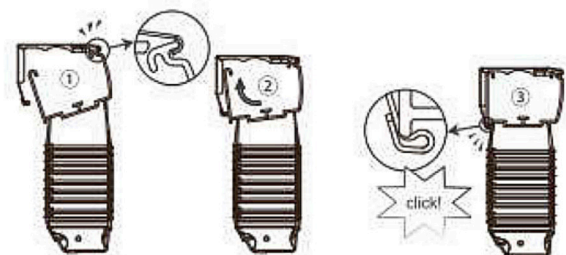
<https://normanusa.com/app/uploads/2022/03/Ultimate-FW-installation-video.html>



- 1 For blind without valance, attach the headrail to the brackets directly as shown to the right.



- 2 Choose one of below ways to attach the headrail to bracket. Start with attaching the headrail front to the bracket first.



Congratulations, the installation of this opening is now complete.