

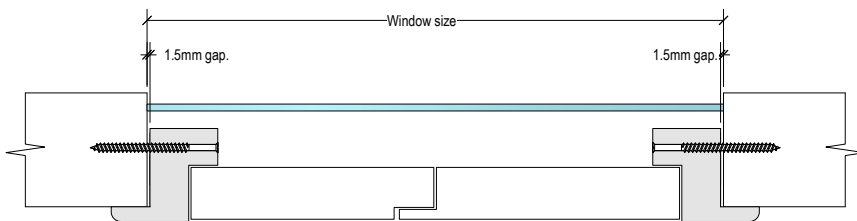
How to measure for Shutters



What you'll need:



Inside (reveal) fit

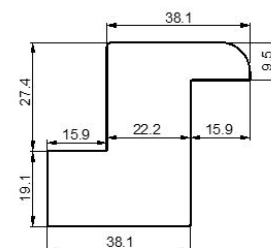
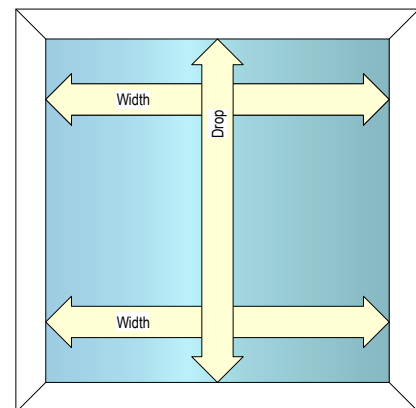


Inside /reveal fitted shutters are mounted inside the window opening with the frame wrapping the edges of the opening.

Measure and use the "tight" measurement for width and drop. Use a metal tape. The factory will make minor deductions required to allow for fitting into the opening.

Measure in 3 places for both the width and the drop, use the smallest measurements.

SUGGESTION: Some windows may be out of square. 3mm can be deducted from your tight measurements to allow some wobble room. This is not necessary, but the gaps will be covered by the frame flanges.

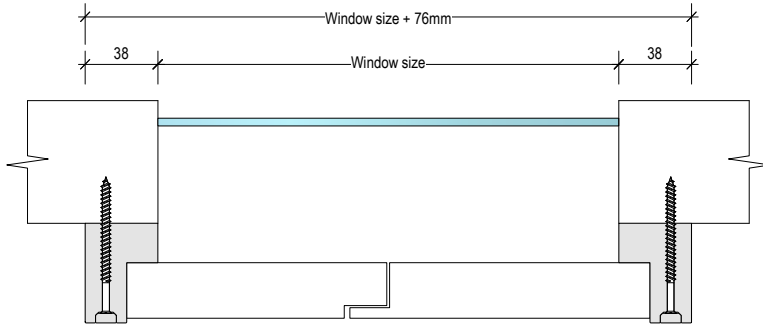


Bullnose Z Frame 38mm

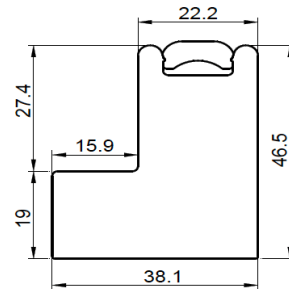
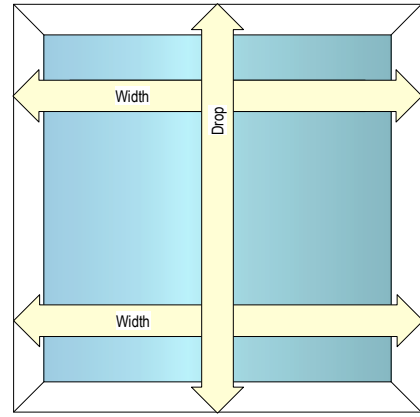


Please see next page for 'Face (outside) fit' and 'Raked shutters'

Face (outside) fit



In order to have the frame of your shutters mounted on the window fascia, measure the window opening and **add on 76mm to both the width and the drop.**



Raked shutters

The measurements required are the width and both left and right side heights

